

# Masport<sup>®</sup> Heating

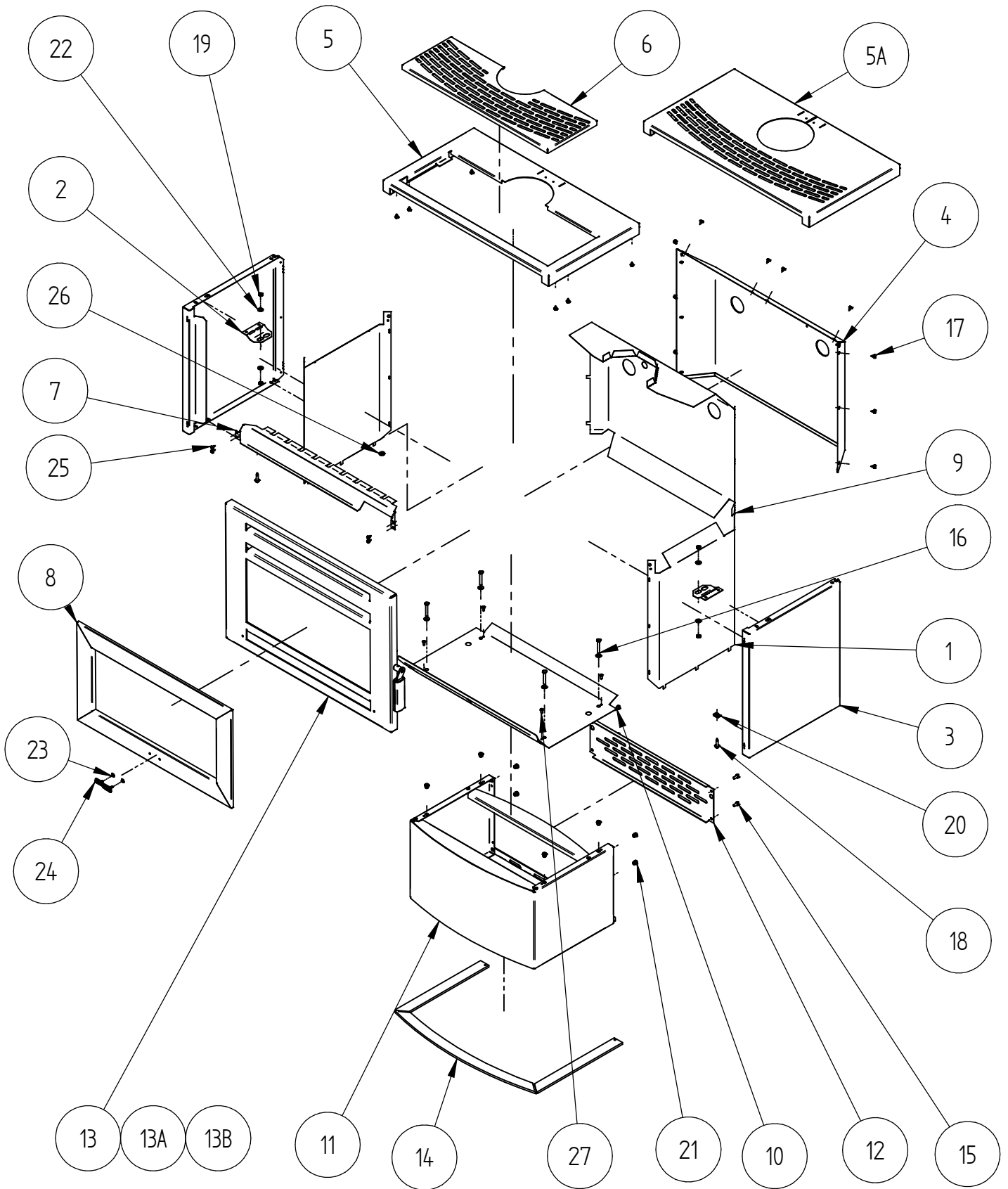
## FREESTANDING WOOD FIRES

### F3000 - NEW ZEALAND

Item No.	MARKET	FUEL TYPE	FINISH	YEAR	FAN
994958	NZ	SOFTWOOD	Charcoal VHT - Charcoal VHT	Feb-2009	Rural Only
994961			Charcoal Enamel - Titanium VHT		
994963			Matt Black Enamel - Titanium VHT	Oct-2009	
994973			Matt Black Enamel - Matt Black VHT	Oct-2013	
994974			Matt Black VHT - Matt Black VHT		



## PANELS, DOOR AND PEDESTAL

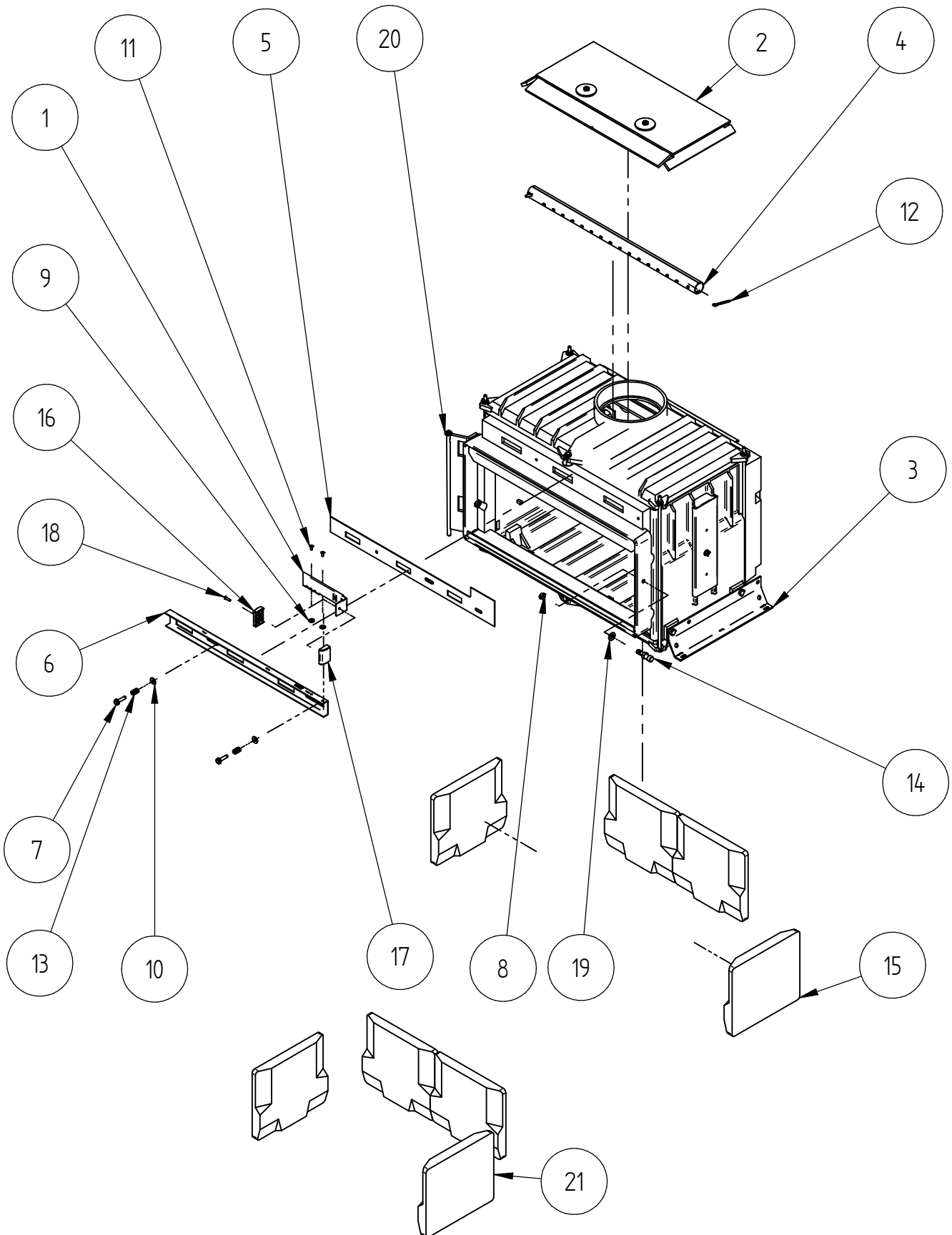


When ordering PLEASE QUOTE PART ID along with Finish Suffix (if applicable)

PANELS, DOOR AND PEDESTAL								
Item	Part ID	Model(s)					Description	Qty
		994958	994961	994963	994973	994974		
1	986121	-	-	-	-	-	F3000 HEATSHIELD - SIDE	2
2	986147	-	-	-	-	-	BRACE - SIDE PANEL	2
3	986314	V05	V05	E01	E01	V02	PANEL-SIDE F3000	2
4	986319	V05	V05	P02	P02	V02	PANEL-REAR F3000	1
5	986321	-N/A.-	-N/A.-	-N/A.-	E01	V02	F3000 TOP PANEL	1
5A	986320	V05	V05	E01	-N/A.-	-N/A.-	F3000 TOP PANEL ASSY	1
6	986324	-N/A.-	-N/A.-	-N/A.-	E01	V02	F3000 REMOVALBLE TOP ASSY	1
7	986357	V05	V05	V02	V02	V02	FAN SHIELD	1
8	986360	V05	V04	V05	V02	V02	TRIM-DOOR, ASSY. F3000	1
9	986372	-	-	-	-	-	HEATSHIELD - BACK, F3000	1
10	986374	-	-	-	-	-	HEATSHIELD - BOTTOM, LE3000	1
11	986383	V05	V05	P02	P02	V02	PEDESTAL ASSY CURVED - F3000	1
12	993480	V05	V05	P02	P02	V02	F7000 PANEL -PED BACK FAN F7000	1
13	994133	-N/A.-	-N/A.-	-	-	-N/A.-	F3000 DOOR ASSEMBLY (SEE DOOR PAGE)	1
13A	994132	-	-	-N/A.-	-N/A.-	-N/A.-		1
13B	994136	-N/A.-	-N/A.-	-N/A.-	-N/A.-	-		1
14	994720	V05	V05	P02	P02	V02	F3000 FOOT ASSEMBLY	1
15	521075	-	-	-	-	-	SCREW; M6X12 HEX ZP	4
16	521077	-	-	-	-	-	SCREW; M6X40 HEX ZP	4
17	521635	-	-	-	-	-	SCREW; S/T 10GX3/8" HEX FLANGE BLK	16
18	521637	-	-	-	-	-	SCREW; S/T 12GX25 TIMBERTITE	4
19	522117	-	-	-	-	-	NUT; HEX STD M6 ZP	4
20	522402	-	-	-	-	-	NUT; SPIRE SNU0537	4
21	522605	-	-	-	-	-	NUT; RIVNUT STD/FLANGE M6	8
22	523007	-	-	-	-	-	WASHER; FLAT 1/4"X5/8"X0.049" ZP	8
23	526001	-	-	-	-	-	CLIP; STARLOCK 4 DIA SLP04	2
24	587835	-	-	-	-	-	BADGE MASPORT HEATING	1
25	521645	-	-	-	-	-	SCREW; S/T 8GX1/2" MUSH FLANGE POZI BLK	4
26	523019	-	-	-	-	-	WASHER; FLAT 5/16"X5/8"X16G ZP	2
27	521605	-	-	-	-	-	SCREW; S/T 10GX1/2" PAN POZI ZP	4

When ordering PLEASE QUOTE PART ID along with Finish Suffix (if applicable)

# AIRSLIDE, BAFFLE, BRICKS AND FIREBOX



When ordering PLEASE QUOTE PART ID along with Finish Suffix (if applicable)

AIRSLIDE, BAFFLE, BRICKS AND FIREBOX								
Item	Part ID	Model(s)					Description	Qty
		994958	994961	994963	994973	994974		
1	986334	-	-	-	-	-	F3000 - EXTENSION - AIRSLIDE	1
2	993463	-	-	-	-	-	BAFFLE ASSY STL F3000	1
3	994131	-	-	-	-	-	F/B ASSY F3000	1
4	994229	-	-	-	-	-	TUBE-SEC AIR, F3000 S/S	1
5	994380	-	-	-	-	-	PLATE,BACK-METER F3000	1
6	994381	-	-	-	-	-	SLIDE-AIR INLET F3000 20X50 X 3 RECT	1
7	521633	-	-	-	-	-	SCREW; S/T M6X25 HEX FLANGE TAPTITE	2
8	522118	-	-	-	-	-	NUT; HEX STD M8 ZP	1
9	523000	-	-	-	-	-	WASHER; FLAT 3/16"X1/2"X18G ZP	2
10	523007	-	-	-	-	-	WASHER; FLAT 1/4"X5/8"X0.049" ZP	2
11	524011	-	-	-	-	-	RIVET; 73 MS 5-3	2
12	525105	-	-	-	-	-	COTTER PIN 5.0X40 ZP	1
13	585223	-	-	-	-	-	SPRING-COMPRESSIONAIR INLET	2
14	586482	-	-	-	-	-	PIN-DOOR LATCH LE 3/5S2 BZP	1
15	587807	-	-	-	-	-	BRICK-F/B, LE2, LE3, 09	4
16	593651	-	-	-	-	-	AIRSLIDE KNOB BOTTOM LH	1
17	593652	-	-	-	-	-	AIRSLIDE KNOB TOP R/H PLAIN	1
18	521650	-	-	-	-	-	SCREW; 6Gx1/2" S/S TYPE 25 C/S POZI	1
19	523021	-	-	-	-	-	WASHER; FLAT M10X19X1.6 ZP	1
20	523019	-	-	-	-	-	WASHER; FLAT 5/16"X5/8"X16G ZP	2
21	787842	-	-	-	-	-	BRICK KIT F3000	1

**\*Optional Sale Kit**

Note: Mar 14 onwards old wooden knobs were replaced by plastic knobs.

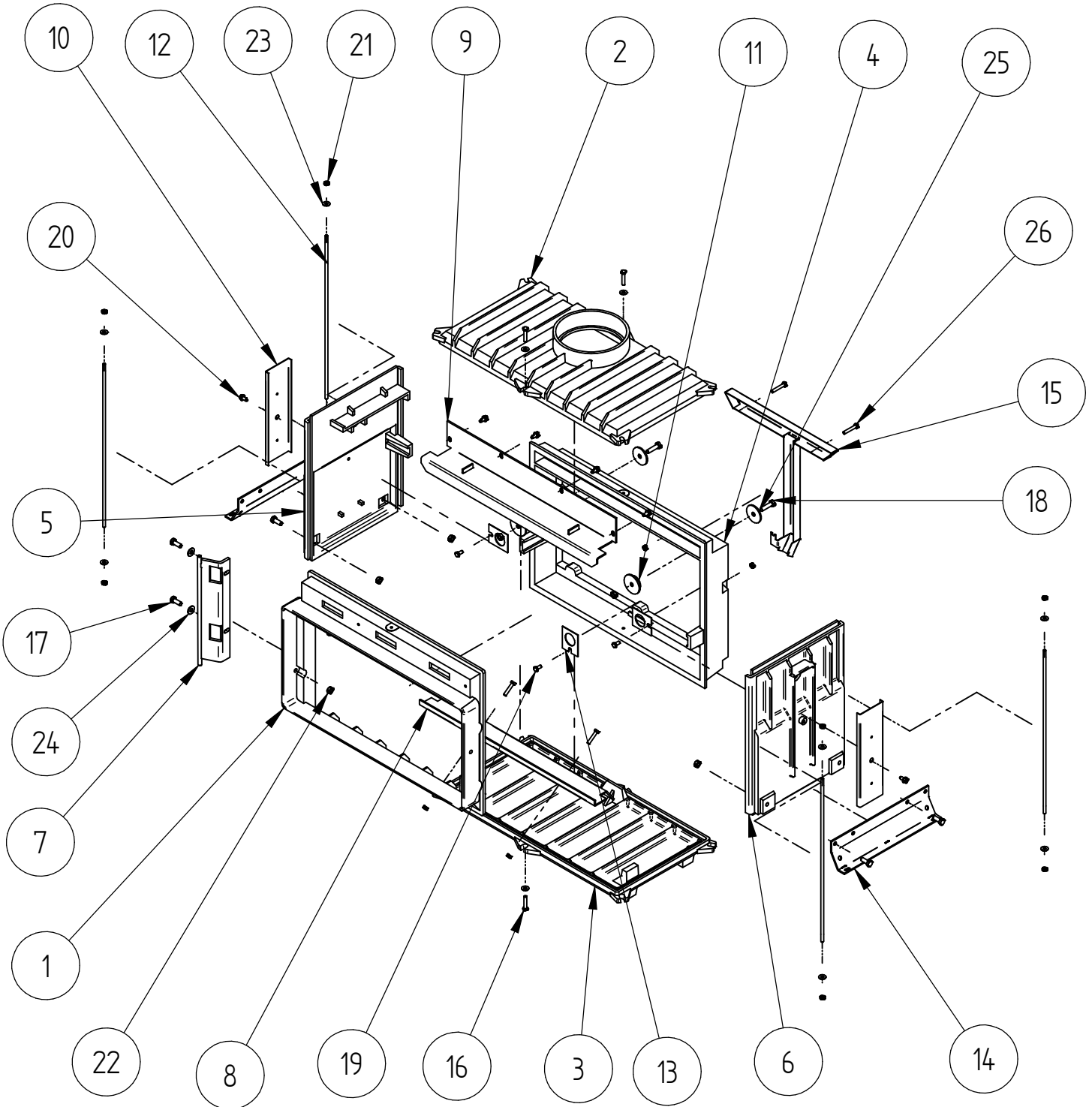
Old wooden knob parts:

1 X 986162 Air control knob

1 X 521642 Screw

Contact Customer service/Engineering Dept. for details of wooden knob system (Issue A).

# FIREBOX DETAILS

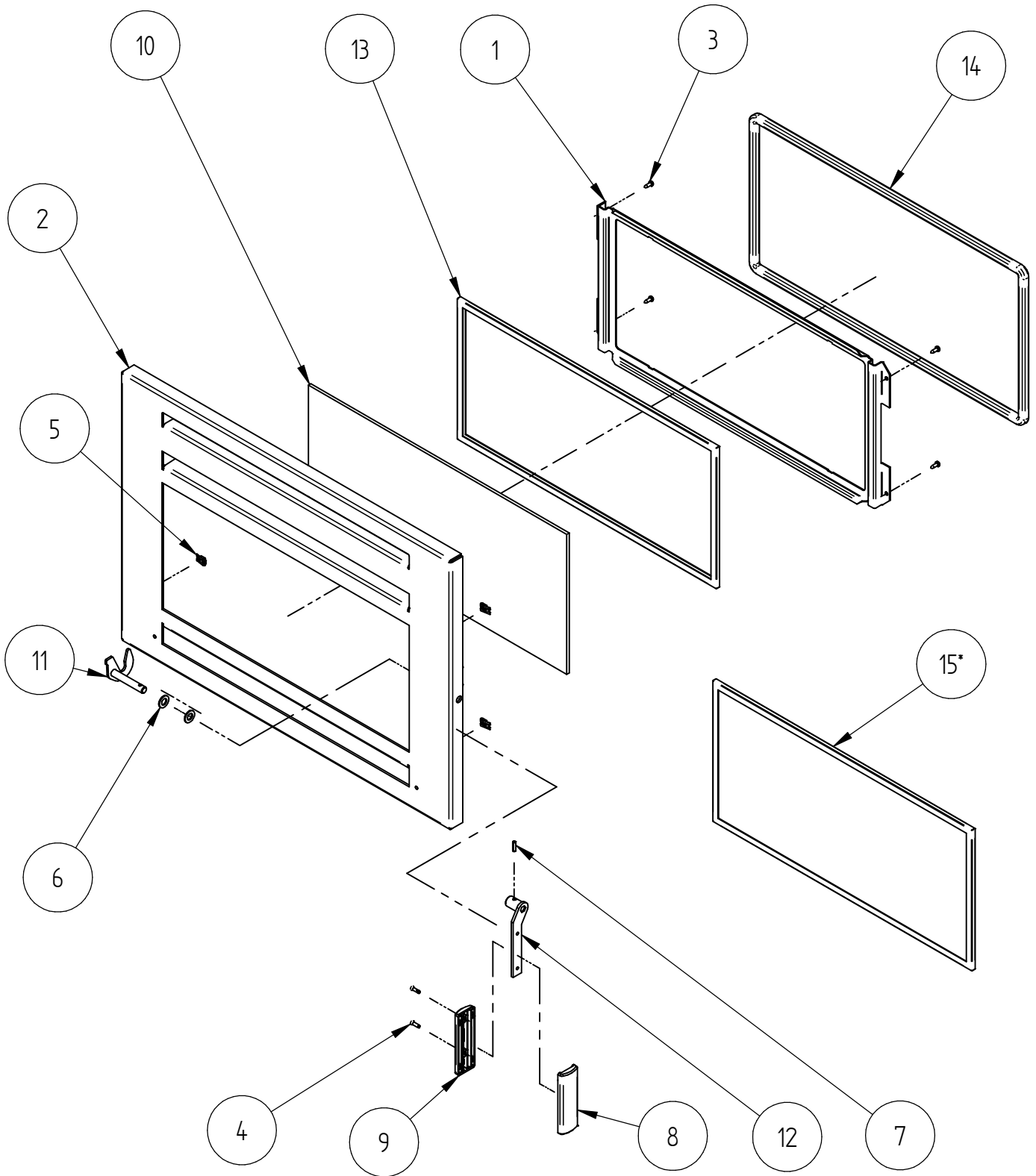


When ordering PLEASE QUOTE PART ID along with Finish Suffix (if applicable)

FIREBOX : 994131								
Item	Part ID	Model(s)					Description	Qty
		994958	994961	994963	994973	994974		
1	686660	-	-	-	-		F/B FRONT LE3/VERONA - SET 1	1
2	686102	-	-	-	-		F/B TOP LE3/5000S2/PANA/VERONA	1
3	686681	-	-	-	-		F/B BOTTOM LE3/5/VER-SET 1 & 7	1
4	686682	-	-	-	-		F/B BACK LE3000	1
5	686645	-	-	-	-		F/B SIDE LH LE3/5000S2/PAN/VERONA	1
6	686646	-	-	-	-		F/B SIDE RH LE3/5000S2/PAN/VERONA	1
7	986369	-	-	-	-		HINGE ASSY F3000	1
8	986665	-	-	-	-		PLATE - BASE AIR, F3000/LE5000	1
9	994232	-	-	-	-		DEFLECTOR ASSY- PRIMARY AIR F3000	1
10	986146	-	-	-	-	-	COVER - SECONDARY AIR	2
11	684089	-	-	-	-	-	PLUG, 34DIAPITTS/FATS0/WFIRE	2
12	984598	-	-	-	-	-	ROD; TIE M6X 425	4
13	984838	-	-	-	-	-	FLANGE - SECONDARY AIR	3
14	986123	-	-	-	-	-	BRACKET-MOUNT,CABINET LE3/5S2	2
15	986365	-	-	-	-	-	CHANNEL- SEC AIR ASSEMBLY	1
16	521059	-	-	-	-	-	SCREW; M6X30 HEX ZP	6
17	521066	-	-	-	-	-	SCREW; M8X20 HEX ZP	6
18	521068	-	-	-	-	-	SCREW; M8X30 HEX ZP	2
19	521075	-	-	-	-	-	SCREW; M6X12 HEX ZP	3
20	521601	-	-	-	-	-	SCREW; S/T 1/4"X1/2" HEX FLANGE ZP	6
21	522117	-	-	-	-	-	NUT; HEX STD M6 ZP	15
22	522118	-	-	-	-	-	NUT; HEX STD M8 ZP	8
23	523007	-	-	-	-	-	WASHER; FLAT 1/4"X5/8"X0.049" ZP	12
24	523034	-	-	-	-	-	WASHER; FLAT M8X19X1.6 ZP	2
25	523035	-	-	-	-	-	WASHER; FLAT M8X22X3 HVY ZP	2
26	521060	-	-	-	-	-	SCREW; M6X35 HEX ZP	2

When ordering PLEASE QUOTE PART ID along with Finish Suffix (if applicable)

## DOOR ASSEMBLY



When ordering PLEASE QUOTE PART ID along with Finish Suffix (if applicable)



DOOR ASSEMBLY								
Item	Part ID	Model(s)/Door(s)				Model(s)	Description	Qty
		994958	994961	994963	994973	994974		
		994133		994132		994136		
1	986485	-	-	-	-	-	RETAINER-GLASS,ALCOAT LE3/5S2	1
2	994227	E01	E01	V05	V05	V02	PANEL-DOOR ASSY F3000	1
3	521619	-	-	-	-	-	SCREW; S/T 8GX1/2" PAN POZI ZP	4
4	521650	-	-	-	-	-	SCREW; 6GX1/2" S/S TYPE 25 C/S POZI	2
5	522401	-	-	-	-	-	NUT; SPIRE SNJ 0116/17/4/6	4
6	523021	-	-	-	-	-	WASHER; FLAT M10X19X1.6 ZP	2
7	525001	-	-	-	-	-	PIN; TENSION 4X16 BLK	1
8	593598	-	-	-	-	-	I3000 DOOR HANDLE FRONT RH PLASTIC	1
9	593599	-	-	-	-	-	DOOR HANDLE REAR L/H PLASTIC	1
10	586486	-	-	-	-	-	GLASS-W/FIRE LE 3000/5000 5X518X243 N-ZERO	1
11	986530	-	-	-	-	-	LATCH DOOR ASSY	1
12	996616	-	-	-	-	-	PLATE - HANDLE ASSY	1
13	C20MMLT	-	-	-	-	-	TAPE ,FLT 3 X 20 LDR AD BLK X 50m ROLL	1
14	C15MMDR	-	-	-	-	-	DOOR ROPE	1
15*	786486	-	-	-	-	-	DOOR GLASS KIT	

**\*Optional Sale Kit**

Note: Mar 14 onwards old wooden handles were replaced by 2-piece plastic handles.

Old wooden handle parts:

1 X 586161 Door Handle

2 X 521628 Screws

Contact Customer service/Engineering Dept. for other parts of wooden handle system (Issue A).

**NOT ILLUSTRATED**

Item	Part ID	Models					Description	Qty
		994958	994961	994963	994973	994974		
1	587845	-	-	-	-	-	INSTRUCTION - BRICK LAYOUT	1
2	593286	-	-	-	-	-	OWNER MANUAL WOODFIRES 2010	1
3	593287	-	-	-	-	-	INSTALL MANUAL WOODFIRES 2010	1
4	593290	-	-	-	-	-	F3000 INSTALLATION DATA SHEET	1
5	995575	-N/A-	-N/A-	-N/A-	-	-	F10/F12 COOK TOP GRILL	1

**SURFACE FINISH CODES FOR PANELS**

VITREOUS ENAMEL		VHT PAINT(Very High Temp)			POWDER COAT	
E01	MATT BLACK	V02	P-000022	METALLIC BLACK	P02	MATT BLACK
E02	GLOSS BLACK	V03	P-000043	CHARCOAL	P03	CHARCOAL
E03	CHARCOAL	V04	P-000081	TITANIUM	P05	SATIN BLACK
		V05	P-000051	CHARCOAL (DAM MET BLK)	P09	METTALIC BLACK
		V06	P-000052	METALLIC BLACK ZINC		

**LESS FREQUENTLY OR OLD SURFACE FINISH CODES FOR PANELS**

VITREOUS ENAMEL			VHT PAINT(Very High Temp)			POWDER COAT	
E04	JASMINE	V01		SATIN BLACK HIGH TEMP	P01	BLUE/BLACK	
					P04	GLOSS CHARCOAL	
					P07	FLAT BLACK	

When ordering PLEASE QUOTE PART ID along with Finish Suffix (if applicable)